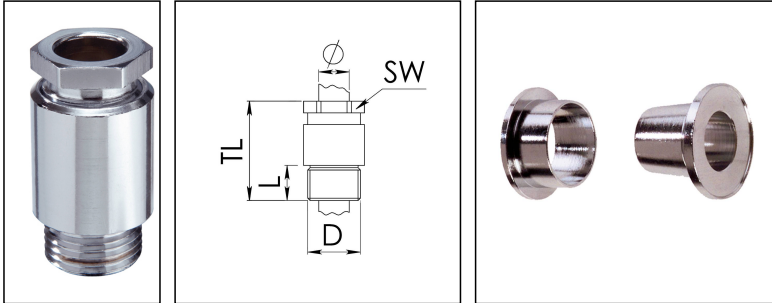


KVM 36-VG A / Cr

Cable gland VG 88773, brass chromed-plated, earthing insert acc. to VG 88812 M36



Products may differ in size, colour and appearance to those shown. If you require further information or customisation, please contact us directly.



Material cable gland	Brass chromium-plated
Material earthing insert	Brass chromium-plated
Temp. range min	-30 °C
Temp. range max	80 °C
Protection class	IP30
Thread type	M
Ø Connection thread D	36
Lead	2
Length screw-in thread L	13 mm
Ø cable diameter max	25,5 mm
Ø cable below cable shield max	-19 mm
Key width SW	36 mm
Collar diameter (E)	40 mm
Total length TL	58 mm
Install. torques fitting	15 N m
Install. torques cap nut	15 N m
Surface	Chromium-plated
Order no. chrome-plated	10014695
Type	KVM 36-VG A / Cr
Packing unit	1
Tariff number	85369010
EAN number	4007685146951
ETIM-Classification	EC000441

Your Contact:

WISKA Electric Systems (Shanghai) Co., Ltd · 维司卡电气设备(上海)有限公司

Room 703, Building 4, No. 258 Jinzang Road, Pudong Jinqiao Export Processing Zone, Shanghai, P.R.China 201206

上海市浦东新区金桥出口加工区金藏路258号4号楼703室 201206

☎ +86-21-58440056 · ☎ +86-21-58440027 · 📠 +86-21-58440031 · contact@wiska.cn · www.wiska.cn




21.01.2025

Your Contact:

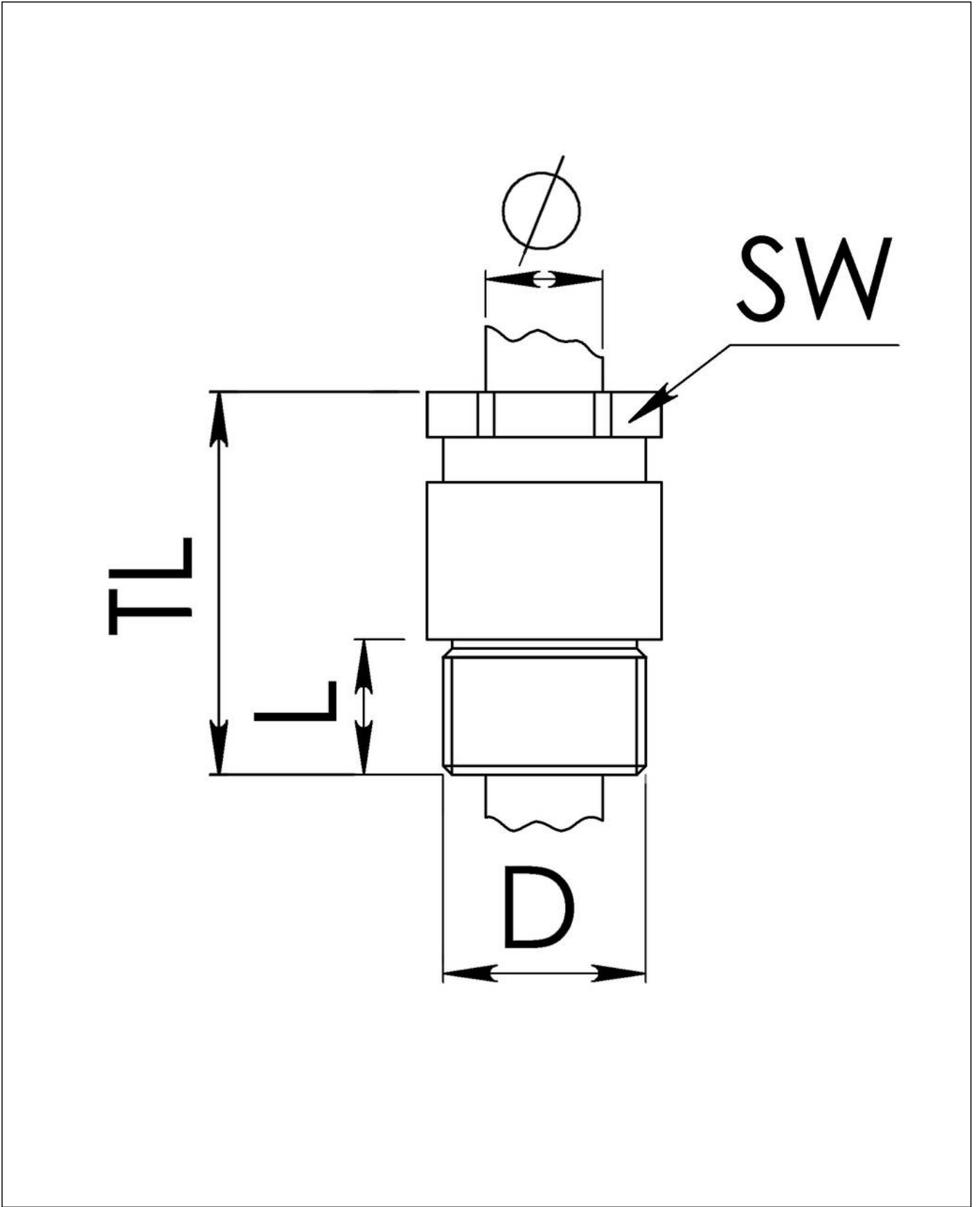
WISKA Electric Systems (Shanghai) Co., Ltd · 维司卡电气设备(上海)有限公司

Room 703, Building 4, No. 258 Jinzang Road, Pudong Jinqiao Export Processing Zone, Shanghai, P.R.China 201206

上海市浦东新区金桥出口加工区金藏路258号4号楼703室 201206

 +86-21-58440056 ·  +86-21-58440027 ·  +86-21-58440031 · contact@wiska.cn · www.wiska.cn

Other technical data on request / subject to change without notice



Your Contact:

WISKA Electric Systems (Shanghai) Co., Ltd · 维司卡电气设备(上海)有限公司

Room 703, Building 4, No. 258 Jinzang Road, Pudong Jinqiao Export Processing Zone, Shanghai, P.R.China 201206

上海市浦东新区金桥出口加工区金藏路258号4号楼703室 201206

☎ +86-21-58440056 · ☎ +86-21-58440027 · 📠 +86-21-58440031 · contact@wiska.cn · www.wiska.cn