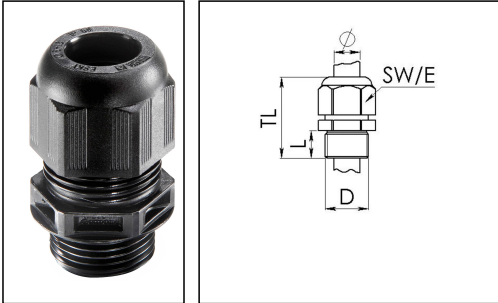


## ESKV 32

Cable gland, polyamide, M32, RAL 9005 with short thread



Product illustrations are exemplary and may differ from the chosen product. Further variants and individual customization, we will gladly provide you on request.



|                          |                           |
|--------------------------|---------------------------|
| Material cable gland     | Polyamide                 |
| Material sealing gasket  | EPDM                      |
| Protection class         | IP69, IP68 (5 bar 30 min) |
| Temp. range min          | -40 °C                    |
| Temp. range max          | 100 °C                    |
| Glow wire test           | 750 °C                    |
| Thread type              | M                         |
| Ø Connection thread D    | 32                        |
| Lead                     | 1,5                       |
| Length screw-in thread L | 12 mm                     |
| Ø cable diameter min     | 13 mm                     |
| Ø cable diameter max     | 21 mm                     |
| Ø cable diameter UL      | 14,6 mm - 19,5 mm         |
| Key width SW             | 36 mm                     |
| Collar diameter (E)      | 40 mm                     |
| Total length TL          | 42 mm - 51 mm             |
| Type of cable anchorage  | A                         |
| Install. torques fitting | 15 N m                    |
| Install. torques cap nut | 4 N m                     |
| Impact category          | 4                         |
| Product Color            | RAL 9005                  |
| Type                     | ESKV 32                   |
| Order no. RAL 9005       | 10066124                  |
| Packing unit             | 25                        |
| ETIM-Classification      | EC000441                  |

Your Contact:

WISKA Electric Systems (Shanghai) Co., Ltd · 维司卡电气设备(上海)有限公司

Room 502, Building 2, No.400 Fangchun Road · Pudong, Shanghai, P.R.China 201210

上海市浦东张江高科技园区芳春路400号2幢502室 201210

☎ +86-21-58440056/58440027 · 📠 +86-21-58440031 · contact@wiska.cn · www.wiska.cn

## Recommended accessories

|                             |          |
|-----------------------------|----------|
| <b>EMUG 32</b>              | 10061784 |
| <b>RDE 32</b>               | 10062186 |
| <b>EADR 32</b>              | 10062805 |
| <b>BS 21</b>                | 10064014 |
| <b>MFD 32/04/070</b>        | 10064344 |
| <b>MFD 32/06/060</b>        | 10064345 |
| <b>MFD 32/04/080</b>        | 10064950 |
| <b>MFD 32/03/080</b>        | 10101018 |
| <b>MFD 32/05/070</b>        | 10101140 |
| <b>MFD 32/01/115-01/085</b> | 10101256 |
| <b>MFD 32/03/065</b>        | 10102169 |
| <b>MFD 32/03/090</b>        | 10102170 |

20.02.2019

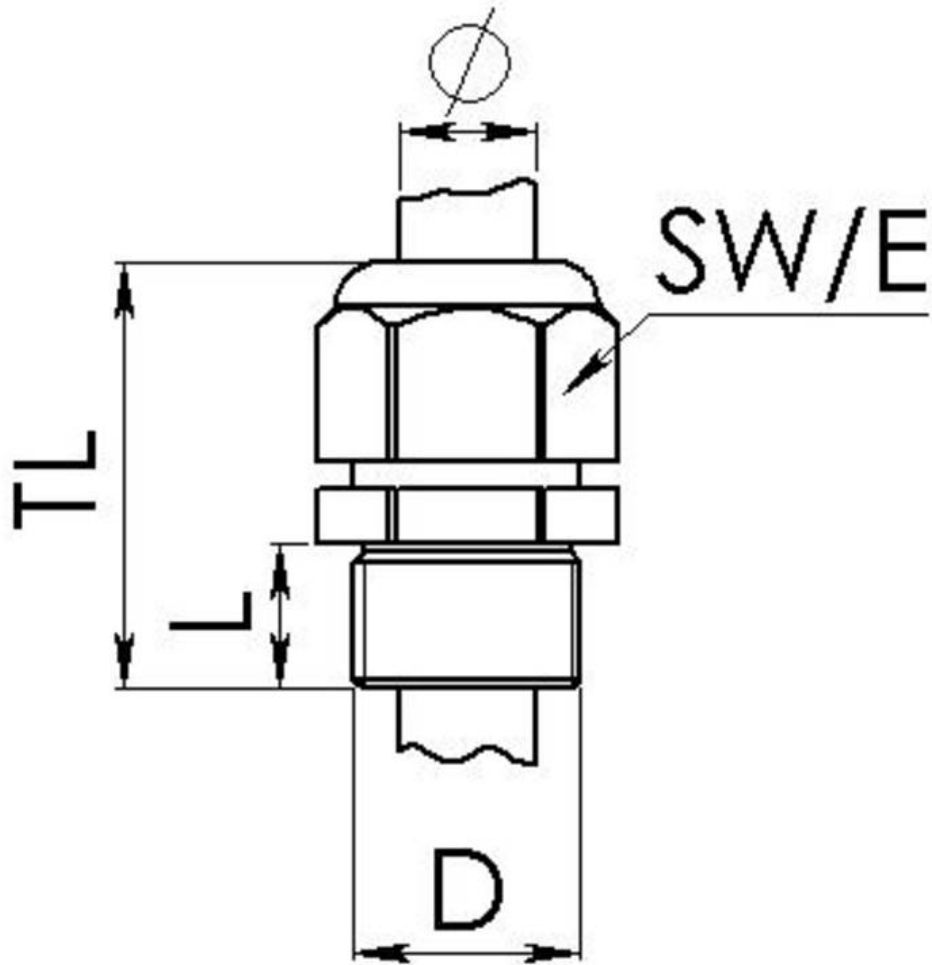
## Your Contact:

**WISKA Electric Systems (Shanghai) Co., Ltd** · 维司卡电气设备(上海)有限公司

Room 502, Building 2, No.400 Fangchun Road · Pudong, Shanghai, P.R.China 201210

上海市浦东张江高科技园区芳春路400号2幢502室 201210

☎ +86-21-58440056/58440027 · 📠 +86-21-58440031 · [contact@wiska.cn](mailto:contact@wiska.cn) · [www.wiska.cn](http://www.wiska.cn)



Your Contact:

WISKA Electric Systems (Shanghai) Co., Ltd · 维司卡电气设备(上海)有限公司

Room 502, Building 2, No.400 Fangchun Road · Pudong, Shanghai, P.R.China 201210

上海市浦东张江高科技园区芳春路400号2幢502室 201210

☎ +86-21-58440056/58440027 · 📠 +86-21-58440031 · [contact@wiska.cn](mailto:contact@wiska.cn) · [www.wiska.cn](http://www.wiska.cn)